

# MULTIBUS SYSTEM PODIUM Dashboard

## A complete dashboard for bus and coach



### An ergonomic driver's workplace

Based on an adjustable steering column supporting a main console, a steering wheel and stalk switches, PODIUM dashboard improves ergonomics for the driver. Moreover, PODIUM is compliant with VDV/ÖPNV, VKBI and new ISO 16121 (ISO/TC/SC13) regulations.

### Modularity

Open platform which can integrate various modules on the center, left and right place (instrument cluster, switches, public transport system...), for a better adaptation to bus and coach variants.

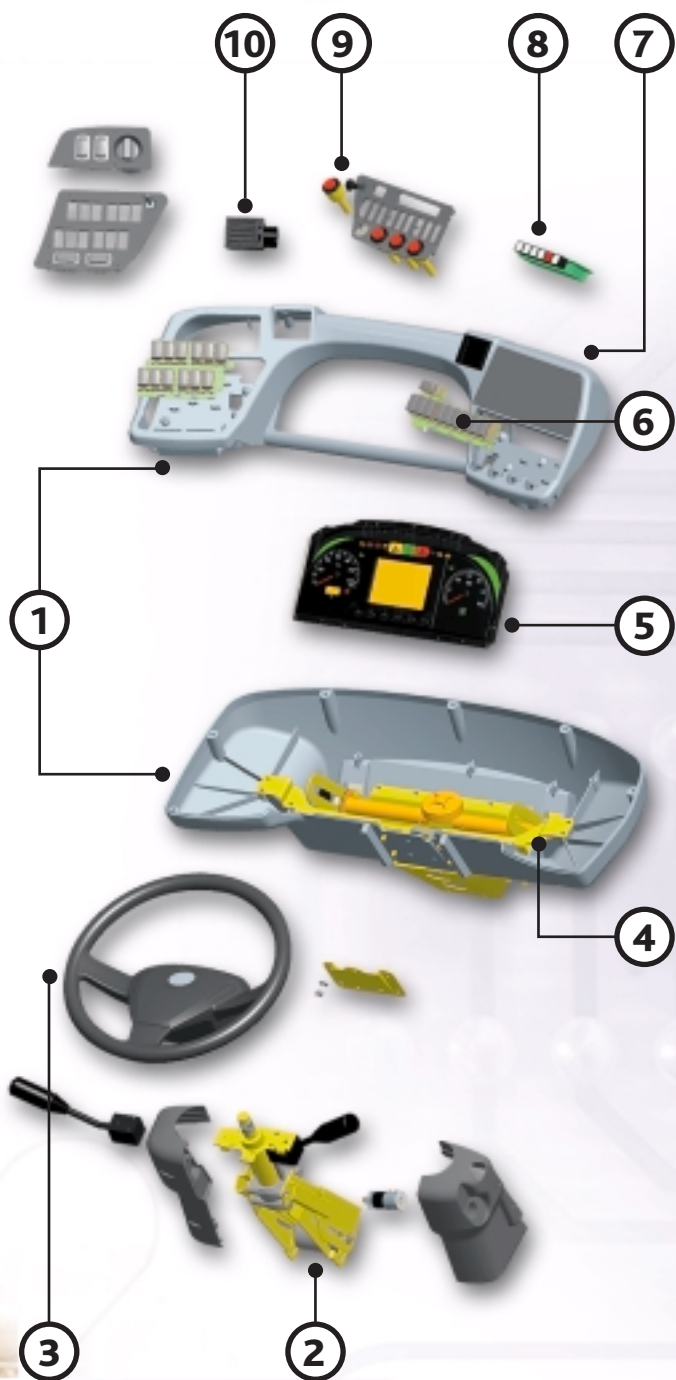
### Technology

PODIUM can be interfaced with conventional or multiplexed electrical architecture like MultiBUS system.

Standard variant integrating latest technologies like:

- **MultIC:** new instrument cluster with displays, stepper motors, LED's...
- **New génération of switch packs** with wireless rocker switches.





- ① **Main console**
  - ergonomical design with more space for the driver's legs,
  - up to 5kg extra load for additional modules on each side.
- ② **Adjustable steering column**
  - 100mm / 7.5° clearance,
  - stalk switches.
- ③ **Steering wheel**
  - optional integrated commands.
- ④ **Rugged mechanical interface steering column / console**
- ⑤ **MultiBUS instrument cluster: MultIC**
  - up to 6 gauges,
  - monochrome, colour or TFT center display,
  - I/O interfaces,
  - CAN communication.
- ⑥ **Switch Packs**
  - new generation of wireless rocker switches.
- ⑦ **Slot for Public Transport system**
- ⑧ **Gearbox switches**
- ⑨ **Up to 4 door switches**
- ⑩ **Driver vents (L and R)**

**ACTIA** : 25, chemin de Pourvoirville – BP 74215 – 31432 TOULOUSE Cedex 4 - FRANCE

Tél : (33) 05 61 17 61 61 – Fax : (33) 05 61 55 42 31

Web site : [www.actia.com](http://www.actia.com)

*Because of technical developments, ACTIA® reserves the right to modify this product technical characteristics, without notice.  
Non-contractual photographs and document*